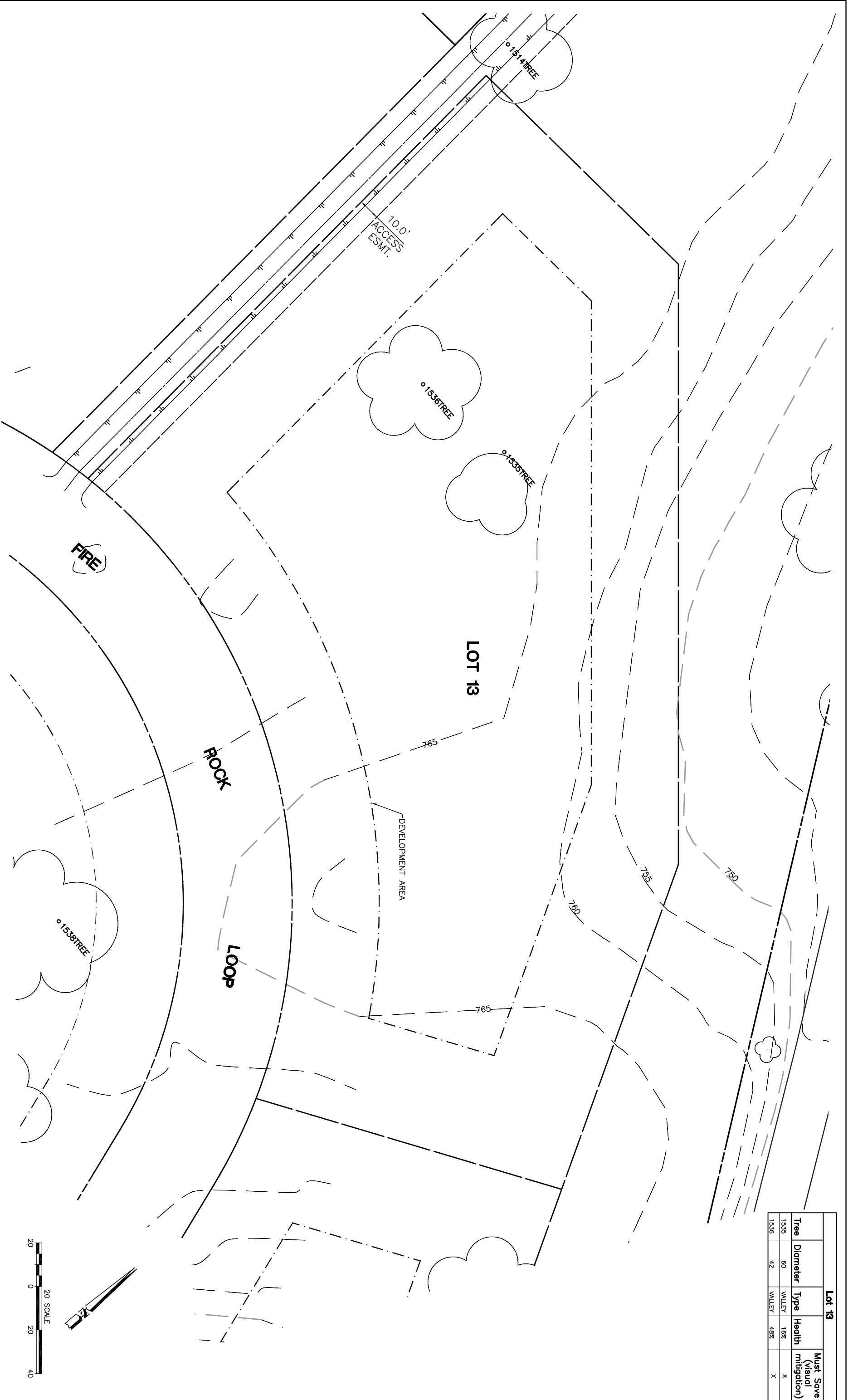


| Lot 13 | | | | |
|--------|----------|--------|--------|-------------------------------|
| Tree | Diameter | Type | Health | Must Save (visual mitigation) |
| 1535 | 60 | VALLEY | 16% | X |
| 1536 | 42 | VALLEY | 48% | X |



NOTE: TREE DATA BASED ON OAK TREE ASSESSMENT BY JACK BRAZEAL ON 10.24.00.

NOTE: ALL TREES OUTSIDE OF BUILDING ENVELOPE TO BE PROTECTED. TREES MAY BE REMOVED BY PERMIT IF NECESSARY FOR DRIVEWAY ACCESS BUT REMOVAL WILL BE MINIMIZED.

NOTE: ALL TREE LOCATIONS WITHIN BUILDING ENVELOPE TO BE VERIFIED PRIOR TO PERMITTING

| REV. | BY | DATE | DESCRIPTION |
|------|----|------|-------------|
| | | | |
| | | | |



INDIVIDUAL SITE PLANS
 SANTA YSABEL RANCH
 COAL 99-0229
 LOT 13

S H E E T
1
 OF 1